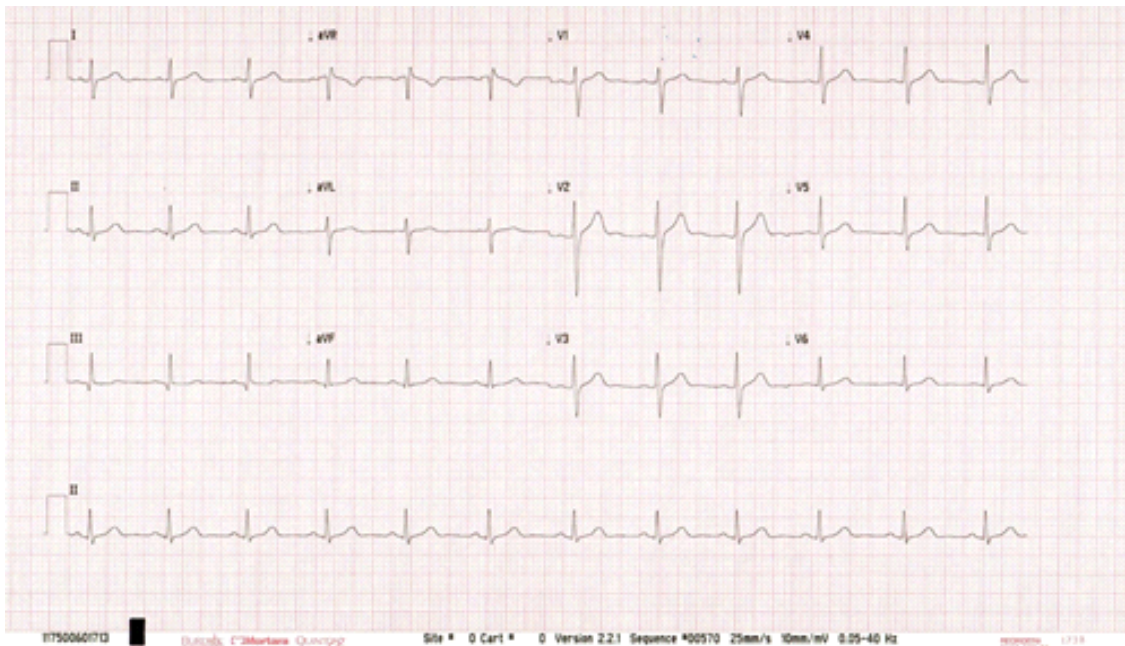


Answers to Picture Quiz

- A. LA ↔ RA lead reversal
 Look for p wave inversion in L₁ and aVL
 QRS complexes and T waves are also negative in L₁ and aVL
 P wave, QRS complex and T wave are positive in aVR
- B. LA ↔ LL lead reversal
 P wave and QRS complex are inverted in L₃.
 P wave is larger in L₁ than in L₂.
- C. RA ↔ RL lead reversal
 L₂ has extremely low amplitude
- D. Complete reversal of chest leads (V₁ ↔ V₆, V₂ ↔ V₅ and V₃ ↔ V₄)
 Complete reversal of the progression of the R wave.
 V₁ is seen at V₆ and V₆ is seen at V₁.
 V₂ is seen at V₅ and V₅ is seen at V₂.
 V₃ is seen at V₄ and V₄ is seen at V₃.

Normal ECG



This is an open-access article distributed under the terms of the Creative Commons Attribution License, which permits unrestricted use, distribution, and reproduction in any medium, provided the original author and source are credited.