

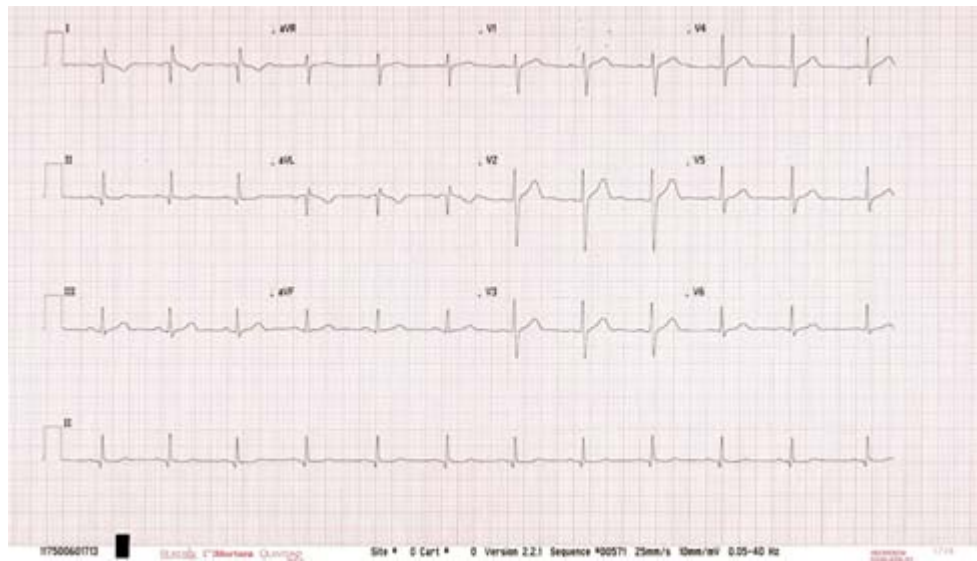
## Picture Quiz

Wijesinghe N

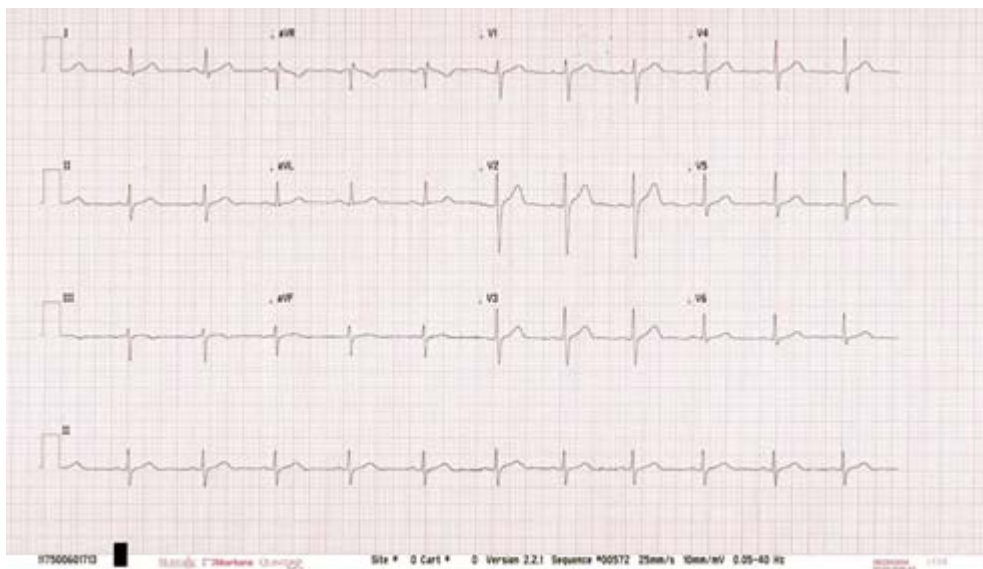
*Journal of the Ceylon College of Physicians*, 2017, **48**, 91-92

Following are ECGs taken from young males when they presented with atypical chest pains. It was thought that these ECGs were recorded erroneously. Please identify the problem associated with each ECG.

**A**

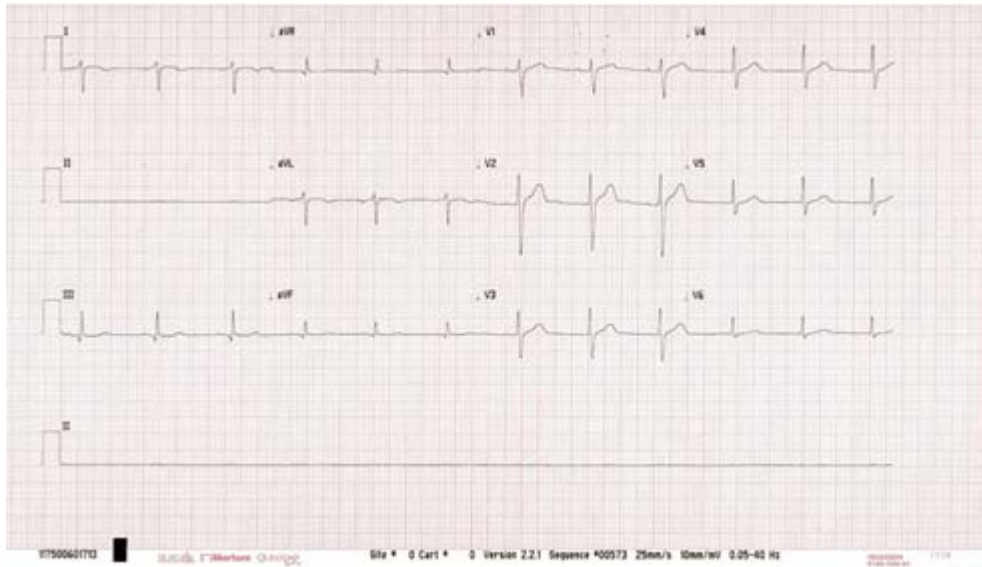


**B**

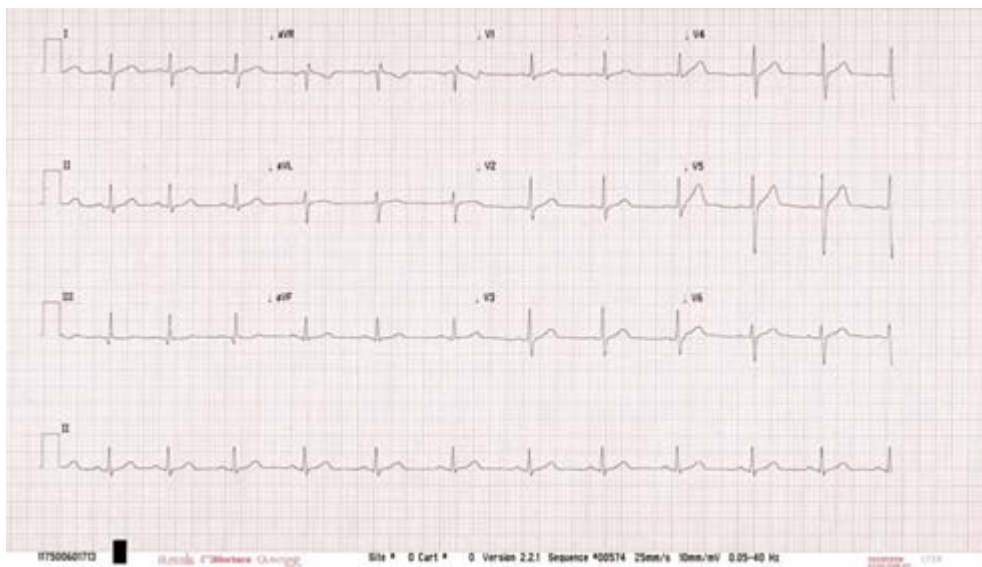


This is an open-access article distributed under the terms of the Creative Commons Attribution License, which permits unrestricted use, distribution, and reproduction in any medium, provided the original author and source are credited.

C



D



(Answers on page 94)